

# Nora

Stage version of Henrik Ibsen's  
*A Doll's House* by Ingmar Bergman

Adapted and translated by  
Frederick J. Marker and Lise-Lone Marker

Fourth-Year Drama Production  
2018-2019 Season

Juilliard



## A Message from Evan Yionoulis

Welcome to the Juilliard Drama Division's production of Ingmar Bergman's *Nora*, directed by Adrienne D Williams. The play is an adaptation of Henrik Ibsen's classic *A Doll's House*, whose final door slam has resounded as a symbol of feminist self-emancipation for more than a century.

We hope that you will join us for the rest of our season: Dominique Morisseau's *Detroit '67*, directed by alumna LisaGay Hamilton; James Lapine and Stephen Sondheim's *Into the Woods*, directed by Sarna Lapine; *Queens*, by Pulitzer Prize-winning playwright alumna Martyna Majok, directed by Tyne Rafaeli; Lucas Hnath's *Red Speedo*, directed by Zi Alikhan; and Bertolt Brecht's *Mother Courage*, directed by Moni Yakim.

We are excited to share with you the work of our fourth-year actors as they, in their final year at Juilliard, call on all aspects of their training, their passion and conviction, to bring to life this exciting and diverse roster of plays, working under the direction of distinguished faculty and exciting professional directors, and in worlds created by extraordinary teams of designers.

**Evan Yionoulis**

*Richard Rodgers Director of the Drama Division*

---

The Juilliard School

presents

Fourth-Year (Group 48) Performance Project

## Nora

Stage version of Henrik Ibsen's *A Doll's House* by Ingmar Bergman

Adapted and translated by Frederick J. Marker and Lise-Lone Marker

Directed by Adrienne D Williams

October 10-14, 2018

Stephanie P. McClelland Drama Theater

Wednesday, Thursday, and Friday at 7:30pm

Saturday at 2pm and 8pm

Sunday at 7pm

Scenic Design: Jason Simms

Costume Design: Jessica Ray Harrison

Lighting Design: Cha See

Original Music and Sound Design: Brian Hurley

Production Stage Manager: Cristina Sison

*Nora is presented by special arrangement with Playwrights Guild of Canada.*

The Drama Division's 2018-19 season is supported in part by a generous grant from  
The Fan Fox and Leslie R. Samuels Foundation.



Large  
Print

Please make certain that all electronic devices are turned off during the performance. The taking of photographs and the use of recording equipment are not permitted in this auditorium.

---

# Nora

## Cast

Nora	Anya Whelan-Smith
Torvald Helmer	Brandon Mendez Homer
Mrs. Linde	Tracie Lane
Nils Krogstad	Anthony Bowden
Doctor Rank	Keshav Moodliar

## Setting

The Helmer home

Performance time: approximately 1 hour and 40 minutes

Performed without intermission

## Staff for *Nora*

### Vocal Coach

Kate Wilson

### Alexander Technique Coach

Carolyn Serota

### Movement Consultant Coach

Mark Olsen

### Stage Manager

Emily Tang\*

### Tarantella Choreographer

Cori Kresge

### Assistant Costume Designer

Robin Piatt Stegman\*

### Assistant Lighting Designer

Charlotte McPherson

### Assistant Sound Designer

Lou Holtzman

### Assistant Stage Manager

Jenise Catrone\*

### Stage Hand

Emily Brown

\* Member, Professional Apprentice Program

The Juilliard School wishes to thank Goodspeed Musicals Costume Collection and Rental for its assistance in this production. Juilliard also thanks the NYU Tisch Drama Program, and gives special thanks to Dr. Mark Singer.

Plays produced this season allow fourth-year actors to explore vital stories that speak to the concerns of the times, to apply all aspects of their training to the creation of character, and, finally, to share the work with you, the audience.

# Drama Division Faculty, Staff, and Guest Artists

---

**Evan Yionoulis**, Richard Rodgers Director  
**Richard Feldman**, Associate Director  
**Katherine Hood**, Managing Director

**Lindsey Alexander**, Assistant to the Director  
**Zi Alikhan**, Director  
**Ian Belknap**, Director  
**Elana Bell**, Poetry  
**Elena Berger**, Guest Teaching Artist  
**Jerome Butler**, Voice Adjunct  
**Christine Caleo**, Alexander Technique Adjunct  
**Anne Cattaneo**, Dramaturgy and Context  
**Amy Christopher**, Guest Teaching Artist  
**Sarah Cimino**, Stage Makeup  
**Alex Correia**, Director  
**Marcia DeBonis**, Guest Teaching Artist  
**Michelle Dibucci**, Music Studies  
**Steven Dougherty**, Ballroom Dancing  
**Jack Doulin**, Guest Teaching Artist  
**Estefanía Fadul**, Director  
**Susan Finch**, Voice Adjunct  
**David Gaines**, Musical Vocal Coach  
**Brittany Giles-Jones**, Assistant Managing Director  
**James Gregg**, Production Activities Manager  
**Rebecca Guy**, Director/Scene Study  
**LisaGay Hamilton**, Director  
**Liz Hayes**, Voice Adjunct  
**Deborah Hecht**, Voice  
**Dennis Hilton-Reid**, Director  
**René Houtrides**, Graduate Seminar  
**Michael Kahn**, Director Emeritus/Guest Lecturer  
**Claire Karpen**, Director  
**Kati Koerner**, Graduate Seminar  
**Shana Komitee**, Graduate Seminar/Dramaturg  
**Bob Krakower**, Guest Teaching Artist  
**Deborah Lapidus**, Singing  
**Sarna Lapine**, Director  
**Ellen Lauren**, Suzuki Method  
**David Lindsay-Abaire**, Co-Director, Playwrights Program  
**Jenny Lord**, Director/Graduate Seminar  
**Kathleen McNenny**, Director/Masks/Audition Workshop  
**Weyni Mengesha**, Director

**Budi Miller**, Guest Teaching Artist  
**Kym Moore**, Guest Teaching Artist  
**Marsha Norman**, Co-Director, Playwrights Program  
**Ellen Novack**, Guest Teaching Artist  
**Erin O'Leary**, Alexander Technique Adjunct  
**Brian O'Neil**, Guest Teaching Artist  
**Charlotte Okie**, Alexander Technique  
**Roger Oliver**, Dramaturgy and Context  
**Mark Olsen**, Movement  
**Orlando Pabotoy**, Director/Physical Comedy  
**Jesse Perez**, Director/Play  
**Marci Phillips**, Guest Teaching Artist  
**Darryl Quinton**, Movement  
**Tyne Rafaeli**, Director  
**Mary Robinson**, Director  
**Carol Rocamora**, Guest Teaching Artist  
**Michael Rudko**, Guest Teaching Artist  
**Dawn Saito**, Guest Teaching Artist  
**Carolyn Serota**, Alexander Technique  
**Jerry Shafnisky**, Operations Manager  
**Michele Shay**, Guest Teaching Artist  
**Meg Simon**, Guest Teaching Artist  
**Cristina Sison**, Stage Management  
**Elizabeth Smith**, Voice/Scene Study  
**Kaitlin Springston**, Scheduling Coordinator  
**Daniel Swee**, Guest Teaching Artist  
**Adam Szymkowicz**, Literary Manager  
**Danya Taymor**, Director  
**Bernie Telsey**, Guest Teaching Artist  
**Gaven Trinidad**, Administrative Apprentice  
**Andrew Wade**, Voice Adjunct  
**Wendy Waterman**, Voice  
**Heather Weiss**, Stage Management  
**Sarah Wells**, Special Events Coordinator  
**Beth Whitaker**, Graduate Seminar  
**Whitney White**, Director  
**Adrienne Williams**, Director  
**Kate Wilson**, Voice  
**Moni Yakim**, Director/Movement  
**Stephanie Ybarra**, Graduate Seminar  
**Janet Zarish**, Director

# The Company

---

Members of **Group 48** in their fourth year of training with the Juilliard Drama Division



Anthony Bowden  
Naples, Florida



Hannah Rose Caton  
London, England



Lorenzo Jackson  
Sayreville, New Jersey



Henry Jenkinson  
Oxford, England



Juliette  
Kenn de Balinhazy  
New York, New York



Ramzi Khalaf  
Beirut, Lebanon



Keshav Moodliar  
New Delhi, India



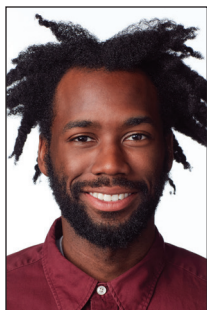
David Rosenberg  
Miami, Florida



Sebastian Roy  
San Salvador, El Salvador



Maggie Walters  
Ontario, Canada



Darryl Gene  
Daughtry Jr.  
Pittsburgh, Pennsylvania



Regina De Vera  
Quezon City, Philippines



Suzannah  
Herschkowitz  
New York, New York



Brandon Mendez  
Homer  
Boston, Massachusetts



Tracie Lane  
Houston, Texas



Jayme Lawson  
Washington, D.C.



Nate Mann  
Bucks County, Pennsylvania



Julia McDermott  
Manhattan Beach, California



Anya Whelan-Smith  
Newton, Massachusetts



# The John Houseman Prize

---



20th Century Fox Film

Established by Joan Houseman in the spring of 1994 to honor the memory of the Juilliard Drama Division’s founding director, The John Houseman Prize, in the form of a living-expense stipend, is awarded annually to acting students at the end of the third year of training who have demonstrated exceptional ability in classical theater. Selected by the Drama Division faculty, the prizewinner for the 2018–19 academic year is **Anthony Bowden**.

## Drama Council

---

**Sharon Ruwart**, *Chair*

Margot Adams  
Cynthia Bayles  
Barbara File  
Barbara Fleischman  
Boyd Gaines

Margot Harley  
Suzanne Kovner  
Sahra T. Lese  
Laura L. Linney  
Stephanie P. McClelland

Dianne R. Morrison  
John Philpit  
Alice Scovell  
John Yarmick



# Juilliard Production Department

---

**Kent McKay**, Associate Vice President for Production

**Jean Berek**, Business and Operations Manager

**Thom Widmann**, Production Manager

**David Strobbe**, Production Manager

**Phil Gutierrez**, Associate Production Manager

**Sallyann Turnbull**, Production Office Administrator

## Costume Shop Supervisor

Luke Simcock

## Assistant Costume Shop Supervisor

Nicola Gardiner

## Costume Shop Office Manager

Edda Baruch

## Wardrobe Supervisor

Márió Talán

## Assistant Wardrobe Supervisor

Amelia Dent

## Design Coordinator

Audrey Nauman

## Head Draper

Barbara Brust

## Drapers

Kimberly Buetzow

Tomoko Naka

## First Hands

Naoko Arcari

Katie Miles

Faye Richards

## Costume Shop Staff

Tiffany Chen\*

McKenna Duffy\*

Phoebe Miller\*

Robin Piatt Stegman\*

## Stitchers

Noelle McMillin

Ana Sofia Meneses

Sharne Van Ryneveld

Alexae Vissel

## Crafts Artisan

Victoria Bek

## Wardrobe Crew

Molly Shimko

## Wigs and Makeup Shop Supervisor

Sarah Cimino

## Wigs and Hair Supervisor

Troy Beard

## Wigs and Makeup Staff

Alyssa Johnson\*

Austen Marroquin\*

## Wigs and Makeup Run Crew

Anna Kathryn Darling

## Electrics Shop Supervisor

Jennifer Linn Wilcox

## Assistant Electrics Shop Supervisor

Joel Turnham

## Master Electrician, Stephanie P. McClelland

Drama Theater

Tercio Bretas

## Assistant Master Electrician

Taylor Lily\*

## Electricians

Chloe Brush\*

Elizabeth Schweitzer\*

## Light Board Operators

Lauren Miller

## Audio Supervisor

Marc Waithe

## Audio Technician

Christopher Schardin

## Properties Shop Supervisor

Kate Dale

## Assistant Properties Shop Supervisor

Josh Hackett

## Stock Manager/Artisan

Jessica Nelson

## Properties Carpenter/Artisan

Ashley Lawler

## Properties Artisans

Andrew Carney\*

Ally Combs

Mackenzie Cunningham

Rachel Wier\*

## Technical Director

Richard Girtain

## Associate Technical Director

Justin Elie

## Stage Supervisor

Byron Hunt

## Assistant Stage Supervisors

Colly Carver

Jessica Sloan Hunter

## Scene Shop Manager

Josh Sturman

## Lead Carpenters

Aaron Martin

Keegan Wilson

## Carpenters

Nate Angrick

Jill Salisbury

John Simone

## Technical Direction Apprentice

Reed Neal\*

## Run Crew

Emily Brown

## Scenic Charge Artist

Jenny Stankeski

## Assistant Scenic Charge Artist

David Blaakman

## Scenic Artists

Jacob Caire\*

Delia Revard\*

Emily Rosenkrantz

MAKE-UP PROVIDED BY

**M·A·C**

*\* Member, Professional  
Apprentice Program*

# Juilliard Board of Trustees and Administration

---

## BOARD OF TRUSTEES

Bruce Kovner, *Chair*  
J. Christopher Kojima, *Vice Chair*  
Katheryn C. Patterson, *Vice Chair*

Julie Anne Choi	Greg Margolies
Kent A. Clark	Vincent A. Mai
Kenneth S. Davidson	Ellen Marcus
Barbara G. Fleischman	Nancy A. Marks
Keith R. Gollust	Stephanie Palmer McClelland
Mary Graham	Christina McInerney
Joan W. Harris	Lester S. Morse Jr.
Matt Jacobson	Stephen A. Novick
Edward E. Johnson Jr.	Susan W. Rose
Karen M. Levy	Deborah Simon
Teresa E. Lindsay	Sarah Billingham Solomon
Laura Linney	William E. "Wes" Stricker, MD
Michael Loeb	

## TRUSTEES EMERITI

June Noble Larkin, *Chair Emerita*

Mary Ellen Barrett	Elizabeth McCormack
Sidney R. Knafel	John J. Roberts

Joseph W. Polisi, *President Emeritus*

## JUILLIARD COUNCIL

Mitchell Nelson, *Chair*

Michelle Demus Auerbach	Terry Morgenthaler
Barbara Brandt	Howard S. Paley
Brian J. Heidtke	John G. Popp
Gordon D. Henderson	Grace E. Richardson
Peter L. Kend	Jeremy T. Smith
Younghee Kim-Wait	Alexander I. Tachmes
Sophie Laffont	Anita Volpe
Jean-Hugues Monier	

## EXECUTIVE OFFICERS AND SENIOR ADMINISTRATION

Damian Woetzel, *President*

### Office of the President

Jacqueline Schmidt, *Vice President and Chief of Staff*  
Kathryn Kozlark, *Special Projects Producer*

### Office of the Provost and Dean

Ara Guzelimian, *Provost and Dean*  
José García-León, *Dean of Academic Affairs and Assessment*

### Dance Division

Alicia Graf Mack, *Director*  
Taryn Kaschock Russell, *Associate Director*  
Katie Friis, *Administrative Director*

### Drama Division

Evan Yionoulis, *Richard Rodgers Director of the Drama Division*  
Richard Feldman, *Associate Director*  
Katherine Hood, *Managing Director*

### Music Division

Adam Meyer, *Director, Music Division, and Deputy Dean of the College*  
Bärli Nugent, *Assistant Dean, Director of Chamber Music*  
Joseph Soucy, *Assistant Dean for Orchestral Studies*  
Mario Igrec, *Chief Piano Technician*  
Joanna K. Trebelhorn, *Director of Orchestral and Ensemble Operations*

### Historical Performance

Robert Mealy, *Director*  
Benjamin D. Sosland, *Administrative Director; Assistant Dean for the Kovner Fellowships*

### Jazz

Wynton Marsalis, *Director of Juilliard Jazz*  
Aaron Flagg, *Chair and Associate Director*

## Ellen and James S. Marcus Institute for Vocal Arts

Brian Zegez, *Artistic Director*  
Kirstin Ek, *Director of Curriculum and Schedules*  
Monica Thakkar, *Director of Performance Activities*

## Lila Acheson Wallace Library and Doctoral Fellows Program

Jane Gottlieb, *Vice President for Library and Information Resources;*  
*Director of the C.V. Starr Doctoral Fellows Program*  
Jeni Dahmus-Farrar, *Director, Archives*  
Alan Klein, *Director of Library Technical Services*

## Preparatory Education

Robert Ross, *Assistant Dean for Preparatory Education*

## Pre-College Division

Yoheved Kaplinsky, *Artistic Director*  
Ekaterina Lawson, *Director of Admissions and Academic Affairs*  
Anna Rozyman, *Director of Performance Activities*

## Music Advancement Program

Anthony McGill, *Artistic Advisor*  
Teresa McKinney, *Director of Community Engagement*

## Evening Division

Danielle La Senna, *Director*

## Enrollment Management and Student Development

Joan D. Warren, *Vice President*  
Kathleen Tesar, *Associate Dean for Enrollment Management*  
Barrett Hipes, *Associate Dean for Student Development*  
Sabrina Tanbara, *Assistant Dean of Student Affairs*  
Cory Owen, *Assistant Dean for International Advisement and Diversity Initiatives*  
William Buse, *Director of Counseling Services*  
Katherine Gertson, *Registrar*  
Tina Gonzalez, *Director of Financial Aid*  
Camille Pajor, *Title IX Coordinator*  
Todd Porter, *Director of Residence Life*  
Howard Rosenberg MD, *Medical Director*  
Beth Techow, *Administrative Director of Health and Counseling Services*  
Holly Tedder, *Director of Disability Services and Associate Registrar*

## Development

Katie Murtha, *Acting Director of Development*  
Amanita Heird, *Director of Special Events*  
Lori Padua, *Director of Planned Giving*  
Ed Piniak, *Director of Development Operations*  
Edward Sien, *Director of Foundation and Corporate Relations*  
Rebecca Vaccarelli, *Director of Alumni Relations*

## Public Affairs

Alexandra Day, *Vice President for Public Affairs*  
Maggie Berndt, *Communications Director*  
Benedict Campbell, *Website Director*  
Jessica Epps, *Marketing Director*  
Susan Jackson, *Editorial Director*  
Sam Larson, *Design Director*

## Office of the COO and Corporate Secretary

Lesley Rosenthal, *Chief Operating Officer and Corporate Secretary*  
Christine Todd, *Vice President and CFO*  
Joseph Mastrangelo, *Vice President for Facilities Management*  
Kent McKay, *Associate Vice President for Production*  
Betsie Becker, *Managing Director of K-12 Programs*  
Michael Kerstan, *Controller*  
Irina Shteyn, *Director of Financial Planning and Analysis*  
Nicholas Mazzurco, *Director of Student Accounts/Bursar*  
Scott Adair Holden, *Director of Office Services*  
Nicholas Saunders, *Director of Concert Operations*  
Tina Martin, *Director of Merchandising*  
Kevin Boutote, *Director of Recording*

## Administration and Law

Maurice F. Edelson, *Vice President for Administration and General Counsel*  
Myung Kang-Huneke, *Deputy General Counsel*  
Carl Young, *Chief Information Officer*  
Steve Doty, *Chief Technology Officer*  
Dmitriy Aminov, *Director of IT Engineering*  
Jeremy Pinquist, *Director of Client Services, IT*  
Caryn G. Doktor, *Director of Human Resources*  
Adam Gagan, *Director of Security*  
Helen Taynton, *Director of Apprenticeship Program*



Photo by Claudio Papapietro

# Juilliard Scholarship Fund

The Juilliard School is the vibrant home to more than 800 dancers, actors, and musicians, over 90 percent of whom are eligible for financial aid. With your help, we can offer the scholarship support that makes a world of difference—to them and to the global future of dance, drama, and music.

*Behind every Juilliard artist  
is all of Juilliard—including you.*

For more information please contact Tori Brand at  
(212) 799-5000, ext. 692, or [vbrand@juilliard.edu](mailto:vbrand@juilliard.edu).  
Give online at [giving.juilliard.edu/scholarship](https://giving.juilliard.edu/scholarship).

Attend a performance  
Enroll in a class  
Shop at our store  
Hire our performers  
Support Juilliard

[juilliard.edu](https://juilliard.edu)