

Into the Woods

Music and Lyrics by Stephen Sondheim
Book by James Lapine

Fourth Year Drama Production
2018-2019 Season

Attend a performance
Enroll in an adult class
Shop at our store
Hire our performers
Support Juilliard

juilliard.edu

Juilliard



A Message from Evan Yionoulis:

Welcome to The Juilliard School Drama Division's production of James Lapine and Stephen Sondheim's *Into the Woods*, directed by Sarna Lapine, a musical about the consequences of "Happily Ever After" and the perils of getting what you wish for.

We hope that you will join us for the rest of our season in the spring, featuring *Queens*, by Pulitzer Prize-winning alumna, Martyna Majok, and directed by Tyne Rafaeli; Lucas Hnath's *Red Speedo*, directed by Zi Alikhan; and Bertolt Brecht's *Mother Courage*, directed by Moni Yakim.

We are excited to share with you the work of our fourth year actors as they, in their final year at Juilliard, call on all aspects of their training, their passion and conviction, to bring to life this exciting and diverse roster of plays, working under the direction of distinguished faculty and exciting professional directors, and in worlds created by extraordinary teams of designers.

Evan

Evan Yionoulis

Richard Rodgers Director of the Drama Division

Faculty member Moni Yakim teaching a movement class, photo by Jessica Katz;
Evan Yionoulis photo by Beowulf Sheehan.

The Juilliard School
presents

Fourth Year (Group 48) Performance Project

Into the Woods

Music and Lyrics by Stephen Sondheim
Book by James Lapine

Director: Sarna Lapine
Music Director: Fred Lassen

December 6-10, 2018
Stephanie P. McClelland Drama Theater

Thursday, Friday, and Monday at 7:30pm
Saturday at 2 and 8pm
Sunday at 7pm

Scenic Design: Mikiko Suzuki McAdams
Costume Design: Valérie Thérèse Bart
Lighting Design: Alan Edwards
Sound Design: Jane Shaw

Production Stage Manager: Sarah E. T. Jackson †

Originally directed on Broadway by James Lapine
Orchestrations by Jonathan Tunick
Orchestrations adapted by Fred Lassen and Matthew Liu

Original Broadway production by
Heidi Landesman Rocco Landesman Rick Steiner
M. Anthony Fisher Frederic H. Mayerson Jujamcyn Theaters

Originally produced by the Old Globe Theater, San Diego, Calif.

Into the Woods is presented through special arrangement with Music Theatre International (MTI).
All authorized performance materials are also supplied by MTI.

The Drama Division's 2018-19 season is supported in part by a generous grant from
The Fan Fox and Leslie R. Samuels Foundation.



Large
Print

Please make certain that all electronic devices are turned off during the performance. The taking of photographs and the use of recording equipment are not permitted in this auditorium.

Cast

Jack/Steward	Henry Jenkinson
Cinderella's Prince/Milky White/Lucinda	David Rosenberg
Baker	Ramzi Khalaf
Rapunzel's Prince/Wolf/Florinda	Sebastian Roy
Cinderella's Father/Mysterious Man/Narrator	Nate Mann
Witch	Juliette Kenn de Balinthazy
Cinderella	Maggie Walters
Little Red Riding Hood	Regina De Vera
Baker's Wife	Julia McDermott
Jack's Mother/Cinderella's Stepmother	Katharine Lorraine**
Rapunzel/Cinderella's Mother	Shereen Pimentel***

Musicians: Jin Wen Sheu, Violin; Emily Mantone, Cello; Hae Jee Cho, Flute; Sydney Lusby, Clarinet; Toby Grace, Percussion

** Katharine Lorraine is an alumna of the Drama Division.

*** Shereen Pimentel is a third year Vocal Arts student.

† Sarah E. T. Jackson appears courtesy of Actor's Equity Association.

Into the Woods will be performed with a 15-minute intermission.

Staff for *Into the Woods*

Vocal Coach

Liz Hayes

Assistant Musical Director

Matthew Liu

Alexander Technique Coach

Charlotte Okie

Assistant Scenic Designer

Joo Hyun Kim

Assistant Stage Managers

Emily Hambridge*

Sydney Gustafson*

Assistant Costume Designer

Tiffany Chen*

Choreographer/Assistant Director

Whitney Brandt

Assistant Lighting Designer

Taylor Jensen

* Member, Professional Apprenticeship Program

Plays produced this season allow fourth year actors to explore vital stories that speak to the concerns of the times, to apply all aspects of their training to the creation of character, and, finally, to share the work with you, the audience.

Videotaping or other video or audio recording of this production is strictly prohibited.

This production uses the Artist Engagement Services of the University Resident Theatre Association, Inc.

Musical Numbers

ACT I

Prologue: Into the Woods
Cinderella at the Grave
Hello, Little Girl
I Guess This Is Goodbye
Maybe They're Magic
I Know Things Now
A Very Nice Prince
First Midnight

Giants in the Sky
Agony
A Very Nice Prince (Reprise)
It Takes Two
Second Midnight

Stay with Me
On the Steps of the Palace
Ever After

Company
Narrator, Cinderella, Cinderella's Mother
Wolf, Little Red Riding Hood
Baker, Jack, Baker's Wife
Baker's Wife, Baker
Little Red Riding Hood
Cinderella, Baker's Wife
Baker, Mysterious Man, Witch, Cinderella's
Prince, Rapunzel's Prince, Florinda, Lucinda,
Stepmother, Jack, Jack's Mother, Little Red
Riding Hood, Cinderella's Father, Rapunzel,
Grandmother, Steward, Cinderella, Baker's Wife
Jack
Cinderella's Prince, Rapunzel's Prince
Cinderella, Baker's Wife
Baker, Baker's Wife
Witch, Cinderella, Cinderella's Prince,
Rapunzel's Prince, Stepmother, Florinda,
Lucinda, Grandmother, Narrator, Baker
Witch, Rapunzel
Cinderella
Company

ACT II

Prologue: So Happy
Agony (Reprise)
Witch's Lament
Any Moment
Moments in the Woods
Your Fault

Last Midnight
No More
No One Is Alone
Finale: Children Will Listen

Company
Cinderella's Prince, Rapunzel's Prince
Witch
Cinderella's Prince, Baker's Wife
Baker's Wife
Jack, Little Red Riding Hood, Baker, Witch,
Cinderella
Witch
Baker, Mysterious Man
Cinderella, Little Red Riding Hood, Baker, Jack
Company

Group 48

The Company of Actors
in their fourth year of
training in the Juilliard
Drama Division



Anthony Bowden
Naples, Florida



Hannah Rose Caton
London, England



Darryl Gene
Daughtry Jr.
Pittsburgh, Pennsylvania



Regina De Vera
Quezon City, Philippines



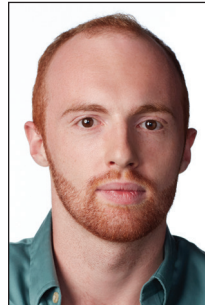
Suzannah
Herschkowitz
New York, New York



Brandon Mendez
Homer
Boston, Massachusetts



Lorenzo Jackson
Sayreville, New Jersey



Henry Jenkinson
Oxford, England



Juliette
Kenn de Balinhazy
New York, New York



Ramzi Khalaf
Beirut, Lebanon



Tracie Lane
Houston, Texas



Jayme Lawson
Washington, D.C.



Nate Mann
Bucks County, Pennsylvania



Julia McDermott
Manhattan Beach, California



Keshav Moodliar
New Delhi, India



David Rosenberg
Miami, Florida



Sebastian Roy
San Salvador, El Salvador



Maggie Walters
Ontario, Canada



Anya Whelan-Smith
Newton, Massachusetts

Drama Division Faculty, Staff, and Guest Artists

Evan Yionoulis, Richard Rodgers Director
Richard Feldman, Associate Director
Katherine Hood, Managing Director

Lindsey Alexander, Assistant to the Director
Zi Alikhan, Director
Ian Belknap, Director
Elana Bell, Poetry
Elena Berger, Guest Teaching Artist
Jerome Butler, Voice Adjunct
Christine Caleo, Alexander Technique Adjunct
Anne Cattaneo, Dramaturgy and Context
Amy Christopher, Guest Teaching Artist
Sarah Cimino, Stage Makeup
Alex Correia, Director
Marcia DeBonis, Guest Teaching Artist
Michelle DiBucci, Music Studies
Steven Dougherty, Ballroom Dancing
Jack Doulin, Guest Teaching Artist
Estefanía Fadul, Director
Susan Finch, Voice Adjunct
David Gaines, Musical Vocal Coach
Brittany Giles-Jones, Assistant Managing Director
James Gregg, Production Activities Manager
Rebecca Guy, Director/Scene Study
LisaGay Hamilton, Director
Liz Hayes, Voice Adjunct
Deborah Hecht, Voice
Dennis Hilton-Reid, Director
René Houtrides, Graduate Seminar
Michael Kahn, Director Emeritus
Claire Karpen, Director
Kati Koerner, Graduate Seminar
Shana Komitee, Graduate Seminar/Dramaturgy
Jenny Koons, Director
Bob Krakower, Guest Teaching Artist
Deborah Lapidus, Singing
Sarna Lapine, Director
Ellen Lauren, Suzuki Method
David Lindsay-Abaire, Co-Director, Playwrights Program
Jenny Lord, Director/Graduate Seminar
Kathleen McNenny, Director/Masks/Audition Workshop
Budi Miller, Guest Teaching Artist

Kym Moore, Guest Teaching Artist
Marsha Norman, Co-Director, Playwrights Program
Ellen Novack, Guest Teaching Artist
Erin O'Leary, Alexander Technique Adjunct
Brian O'Neil, Guest Teaching Artist
Charlotte Okie, Alexander Technique
Roger Oliver, Dramaturgy and Context
Mark Olsen, Movement
Orlando Pabotoy, Director/Physical Comedy
Jesse Perez, Director/Play
Marci Phillips, Guest Teaching Artist
Darryl Quinton, Movement
Tyne Rafaeli, Director
Mary Robinson, Director
Carol Rocamora, Guest Teaching Artist
Michael Rudko, Guest Teaching Artist
Dawn Saito, Guest Teaching Artist
Carolyn Serota, Alexander Technique
Jerry Shafnisky, Operations Manager
Michele Shay, Guest Teaching Artist
Meg Simon, Guest Teaching Artist
Cristina Sison, Stage Management
Elizabeth Smith, Voice/Scene Study
Kaitlin Springston, Scheduling Coordinator
Daniel Swee, Guest Teaching Artist
Adam Szymkiewicz, Literary Manager
Danya Taymor, Director
Bernie Telsey, Guest Teaching Artist
Gaven Trinidad, Administrative Apprentice
Andrew Wade, Voice Adjunct
Wendy Waterman, Voice
Heather Weiss, Stage Management
Sarah Wells, Special Events Coordinator
Beth Whitaker, Graduate Seminar
Whitney White, Director
Adrienne Williams, Director
Kate Wilson, Voice
Moni Yakim, Director/Movement
Stephanie Ybarra, Graduate Seminar
Janet Zarish, Director

The John Houseman Prize



20th Century Fox Film

Established by Joan Houseman in the spring of 1994 to honor the memory of the Juilliard Drama Division's founding director, The John Houseman Prize, in the form of a living-expense stipend, is awarded annually to acting students at the end of the third year of training who have demonstrated exceptional ability in classical theater. Selected by the Drama Division faculty, the prizewinner for the 2018–19 academic year is **Anthony Bowden**.

Drama Council

Sharon Ruwart, *Chair*

Margot Adams
Cynthia Bayles
Barbara File
Barbara Fleischman
Boyd Gaines

Margot Harley
Suzanne Kovner
Sahra T. Lese
Laura L. Linney
Stephanie P. McClelland

Dianne R. Morrison
John Philpit
Alice Scovell
John Yarmick

Juilliard Production Department

Kent McKay, Associate Vice President for Production

Jean Berek, Business and Operations Manager

Thom Widmann, Production Manager

David Strobbe, Production Manager

Phil Gutierrez, Associate Production Manager

Sallyann Turnbull, Production Office Administrator

Costume Shop Supervisor
Luke Simcock

Assistant Costume Shop Supervisor
Nicola Gardiner

Costume Shop Office Manager
Edda Baruch

Wardrobe Supervisor
Máirion Talán

Assistant Wardrobe Supervisor
Amelia Dent

Design Coordinator
Audrey Nauman

Head Draper
Barbara Brust

Drapers
Kimberly Buetzow
Tomoko Naka

First Hands
Naoko Arcari
Katie Miles
Faye Richards

Costume Shop Staff
Tiffany Chen*
McKenna Duffy*
Phoebe Miller*
Robin Piatt Stegman*

Stitchers
Genevieve Beller
Ana-Sofia Meneses
Noelle McMillin
Kyle Pearson
Sharne van Ryneveld

Crafts Artisan
Victoria Bek

Wardrobe Crew
Amelia Dent
Victor Lozano

Wigs and Makeup Shop Supervisor
Sarah Cimino

Wigs and Hair Supervisor
Troy Beard

Wigs and Makeup Staff
Alyssa Johnson*
Austen Marroquin*

Wigs and Makeup Run Crew
Sara Donovan

Electrics Shop Supervisor
Jennifer Linn Wilcox

Assistant Electrics Shop Supervisor
Joel Turnham

Master Electrician, Stephanie P. McClelland
Drama Theater
Tercio Bretas

Assistant Master Electrician
Chloe Brush*

Staff Electrician
Eleanor Smith

Electricians
Taylor Lilly*
Elizabeth Schweitzer*

Light Board Operator
Carly Shiner

Spotlight Operators
Matthew Holcombe
Lauren Miller

Audio Supervisor
Marc Waithe

Audio Technician
Christopher Schardin

A2
Claire Autran
Jaechelle Johnson

Properties Shop Supervisor
Kate Dale

Assistant Properties Shop Supervisor
Josh Hackett

Stock Manager/Artisan
Jessica Nelson

Properties Carpenter/Artisan
Ashley Lawler

Properties Artisans
Andrew Carney*

Ally Combs
Mackenzie Cunningham
Rachel Wier*

Technical Director
Richard Girtain

Associate Technical Director
Justin Elie

Stage Supervisor
Byron Hunt

Assistant Stage Supervisors
Colly Carver
Jessica Sloan Hunter

Scene Shop Manager
Josh Sturman

Lead Carpenters
Aaron Martin
Keegan Wilson

Carpenters
Nate Angrick
Jill Salisbury
John Simone

Technical Direction Apprentice
Reed Neal*

Run Crew
Samuel Floyd

Scenic Charge Artist
Jenny Stanjeski

Assistant Scenic Charge Artist
David Blaakman

Scenic Artists
Angela Alvarez
Emily Barnhill
Jacob Caire*
Courtney Fink
Delia Revard*

MAKE-UP PROVIDED BY
M·A·C

* Member, Professional
Apprentice Program

Juilliard Board of Trustees and Administration

BOARD OF TRUSTEES

Bruce Kovner, *Chair*
J. Christopher Kojima, *Vice Chair*
Kathryn C. Patterson, *Vice Chair*

Julie Anne Choi	Vincent A. Mai
Kent A. Clark	Ellen Marcus
Kenneth S. Davidson	Nancy A. Marks
Barbara G. Fleischman	Stephanie Palmer McClelland
Keith R. Gollust	Christina McInerney
Mary Graham	Lester S. Morse Jr.
Joan W. Harris	Stephen A. Novick
Matt Jacobson	Susan W. Rose
Edward E. Johnson Jr.	Jeffrey Seller
Karen M. Levy	Deborah Simon
Teresa E. Lindsay	Sarah Billingham Solomon
Laura Linney	William E. "Wes" Stricker, MD
Michael Loeb	Yael Taqu
Greg Margolies	

TRUSTEES EMERITI

June Noble Larkin, *Chair Emerita*
Mary Ellin Barrett Elizabeth McCormack
Sidney R. Knafel

Joseph W. Polisi, *President Emeritus*

JUILLIARD COUNCIL

Mitchell Nelson, <i>Chair</i>	
Michelle Demus Auerbach	Terry Morgenthaler
Barbara Brandt	Howard S. Paley
Brian J. Heidtke	John G. Popp
Gordon D. Henderson	Grace E. Richardson
Peter L. Kend	Jeremy T. Smith
Younghee Kim-Wait	Alexander I. Tachmes
Sophie Laffont	Anita Volpe
Jean-Hugues Monier	

EXECUTIVE OFFICERS AND SENIOR ADMINISTRATION

Damian Woetzel, *President*

Office of the President

Jacqueline Schmidt, *Vice President and Chief of Staff*
Kathryn Kozlark, *Special Projects Producer*

Office of the Provost and Dean

Ara Guzelimian, *Provost and Dean*
José García-León, *Dean of Academic Affairs and Assessment*

Dance Division

Alicia Graf Mack, *Director*
Taryn Kaschok Russell, *Associate Director*
Katie Friis, *Administrative Director*

Drama Division

Evan Yionoulis, *Richard Rodgers Director*
Richard Feldman, *Associate Director*
Katherine Hood, *Managing Director*

Music Division

Adam Meyer, *Director, Music Division, and Deputy Dean of the College*
Bärli Nugent, *Assistant Dean, Director of Chamber Music*
Joseph Soucy, *Assistant Dean for Orchestral Studies*
Mario Igrec, *Chief Piano Technician*
Joanna K. Trebelhorn, *Director of Orchestral and Ensemble Operations*

Historical Performance

Robert Mealy, *Director*
Benjamin D. Sosland, *Administrative Director; Assistant Dean for the Kovner Fellowships*

Jazz

Wynton Marsalis, *Director of Juilliard Jazz*
Aaron Flagg, *Chair and Associate Director*

Ellen and James S. Marcus Institute for Vocal Arts

Brian Zeger, *Artistic Director*
Kirstin Ek, *Director of Curriculum and Schedules*
Monica Thakkar, *Director of Performance Activities*

Lila Acheson Wallace Library and Doctoral Fellows Program

Jane Gottlieb, *Vice President for Library and Information Resources;*
Director of the C.V. Starr Doctoral Fellows Program
Jeni Dahmus Farah, *Director, Archives*
Alan Klein, *Director of Library Technical Services*

Preparatory Education

Robert Ross, *Assistant Dean for Preparatory Education*

Pre-College Division

Yoheved Kaplinsky, *Artistic Director*
Ekaterina Lawson, *Director of Admissions and Academic Affairs*
Anna Royzman, *Director of Performance Activities*

Music Advancement Program

Anthony McGill, *Artistic Advisor*
Teresa McKinney, *Director of Community Engagement*

Evening Division

Danielle La Senna, *Director*

Enrollment Management and Student Development

Joan D. Warren, *Vice President*
Kathleen Tesar, *Associate Dean for Enrollment Management*
Barrett Hipes, *Associate Dean for Student Development*
Sabrina Tanbara, *Assistant Dean of Student Affairs*
Cory Owen, *Assistant Dean for International Advisement and Diversity Initiatives*
William Buse, *Director of Counseling Services*
Katherine Gertson, *Registrar*
Tina Gonzalez, *Director of Financial Aid*
Camille Pajor, *Title IX Coordinator*
Todd Porter, *Director of Residence Life*
Howard Rosenberg MD, *Medical Director*
Beth Teshow, *Administrative Director of Health and Counseling Services*
Holly Tedder, *Director of Disability Services and Associate Registrar*

Development

Katie Murtha, *Acting Director of Development*
Amanita Heird, *Director of Special Events*
Lori Padua, *Director of Planned Giving*
Ed Piniak, *Director of Development Operations*
Edward Sien, *Director of Foundation and Corporate Relations*
Rebecca Vaccarelli, *Director of Alumni Relations*

Public Affairs

Alexandra Day, *Vice President for Public Affairs*
Maggie Berndt, *Communications Director*
Benedict Campbell, *Website Director*
Jessica Epps, *Marketing Director*
Susan Jackson, *Editorial Director*

Office of the COO and Corporate Secretary

Lesley Rosenthal, *Chief Operating Officer and Corporate Secretary*
Christine Todd, *Vice President and CFO*
Joseph Mastrangelo, *Vice President for Facilities Management*
Kent McKay, *Associate Vice President for Production*
Betsy Becker, *Managing Director of K-12 Programs*
Michael Kerstan, *Controller*
Irina Shteyn, *Director of Financial Planning and Analysis*
Nicholas Mazzurco, *Director of Student Accounts/Bursar*
Scott Adair Holden, *Director of Office Services*
Nicholas Saunders, *Director of Concert Operations*
Tina Matin, *Director of Merchandising*
Kevin Boutote, *Director of Recording*

Administration and Law

Maurice F. Edelson, *Vice President for Administration and General Counsel*
Myung Kang-Huneke, *Deputy General Counsel*
Carl Young, *Chief Information Officer*
Steve Doty, *Chief Technology Officer*
Dmitriy Aminov, *Director of IT Engineering*
Jeremy Pinquist, *Director of Client Services, IT*
Caryn G. Doktor, *Director of Human Resources*
Adam Gagan, *Director of Security*
Helen Taynton, *Director of Apprentice Program*